

# OLD MARSH GOLF CLUB REPLAT NO. 14

SITUATE IN SECTION 28, TOWNSHIP 41 SOUTH, RANGE 42 EAST,  
BEING A REPLAT OF LOTS 146, 147 AND 148, OLD MARSH GOLF CLUB, A PLANNED UNIT DEVELOPMENT,  
AS RECORDED IN PLAT BOOK 58, PAGES 62 THROUGH 75, PUBLIC RECORDS  
OF PALM BEACH COUNTY, FLORIDA  
MAY, 2003 SHEET 2 OF 2

### ACKNOWLEDGEMENT:

STATE OF CALIFORNIA  
COUNTY OF SANTA CLARA ORANGE  
BEFORE ME PERSONALLY APPEARED PAUL N. HAYASHI WHO IS PERSONALLY KNOWN TO ME OR HAS PROVIDED A DRIVERS LICENSE AS IDENTIFICATION, AND WHO EXECUTED THE FOREGOING AS FIRST VICE PRESIDENT OF COMERICA BANK, A CALIFORNIA BANKING CORPORATION AND SEVERALLY ACKNOWLEDGED TO AND BEFORE ME THAT HE EXECUTED SUCH INSTRUMENT AS SUCH OFFICER OF SAID CORPORATION AND THAT IT WAS AFFIXED TO SAID INSTRUMENT BY DUE AND REGULAR CORPORATE AUTHORITY, AND THAT SAID INSTRUMENT IS THE FREE ACT AND DEED OF SAID CORPORATION.  
WITNESS MY AND OFFICIAL SEAL THIS 24 DAY OF MAY, 2003.  
MY COMMISSION EXPIRES: APRIL 15, 2004  
COMMISSION NUMBER 1257342  
NOTARY  
M. SUZANNE LADRIDD  
PRINT NAME

### SURVEYOR'S NOTES:

BEARINGS SHOWN HEREON ARE BASED ON AND RELATIVE TO THE BEARING OF SOUTH 53°02'44" WEST BETWEEN FOUND PCP'S ON THE CENTERLINE OF OLD MARSH ROAD AS DEPICTED ON THIS PLAT. SAME PCP'S ALSO SHOWN ON THE PLAT OF OLD MARSH GOLF CLUB, ACCORDING TO THE PLAT THEREOF, AS RECORDED IN PLAT BOOK 58, PAGE 62 THROUGH 75 OF THE PUBLIC RECORDS OF PALM BEACH COUNTY, FLORIDA.  
LINES WHICH INTERSECT CURVES ARE NON-RADIAL UNLESS OTHERWISE NOTED.  
DIMENSIONS SHOWN HEREON ARE IN FEET AND DECIMAL PARTS THEREOF AND ARE BASED ON THE DEFINITION OF A FOOT AS ADOPTED BY THE UNITED STATES BUREAU OF STANDARDS AND REFER TO THE HORIZONTAL PLANE.  
NOTICE: THIS PLAT, AS RECORDED IN ITS GRAPHIC FORM, IS THE OFFICIAL DEPICTION OF THE SUBDIVIDED LANDS DESCRIBED HEREIN AND WILL IN NO CIRCUMSTANCES BE SUPPLANTED IN AUTHORITY BY ANY OTHER GRAPHIC OR DIGITAL FORM OF THE PLAT. THERE MAY BE ADDITIONAL RESTRICTIONS THAT ARE NOT RECORDED ON THIS PLAT THAT MAY BE FOUND IN THE PUBLIC RECORDS OF THIS COUNTY.  
BUILDING SETBACKS SHALL BE AS REQUIRED BY PALM BEACH COUNTY ZONING REGULATIONS.  
NO BUILDINGS, IMPROVEMENTS OF ANY KIND, TREES OR SHRUBS SHALL BE PLACED ON ANY EASEMENT WITHOUT PRIOR WRITTEN APPROVAL OF ALL EASEMENT BENEFICIARIES AND ALL APPLICABLE COUNTY APPROVALS OR PERMITS AS REQUIRED FOR SUCH ENCROACHMENTS.  
THE DRAINAGE EASEMENTS ON LOTS 147 AND 148, AS SHOWN ON THE PLAT OF OLD MARSH GOLF CLUB, RECORDED IN PLAT BOOK 58, PAGES 62 THROUGH 75, PUBLIC RECORDS OF PALM BEACH COUNTY, FLORIDA, WERE ABANDONED PER OFFICIAL RECORD BOOK 15231, PAGE 260, PUBLIC RECORDS OF PALM BEACH COUNTY, FLORIDA.

### PALM BEACH COUNTY APPROVAL:

COUNTY ENGINEER:  
THIS PLAT IS HEREBY APPROVED FOR RECORD PURSUANT TO PALM BEACH COUNTY ORDINANCE 95-33, AND IN ACCORDANCE WITH SECTION 177.071(2) F.S., THIS 15 DAY OF JULY 2003 AND HAS BEEN REVIEWED BY A PROFESSIONAL SURVEYOR AND MAPPER EMPLOYED BY PALM BEACH COUNTY IN ACCORDANCE WITH SEC. 177.081(1) F.S.  
George T. Webb  
GEORGE T. WEBB, P.E.  
COUNTY ENGINEER

### NORTHERN PALM BEACH COUNTY IMPROVEMENT DISTRICT ACKNOWLEDGEMENT: (UNIT OF DEVELOPMENT No. 21)

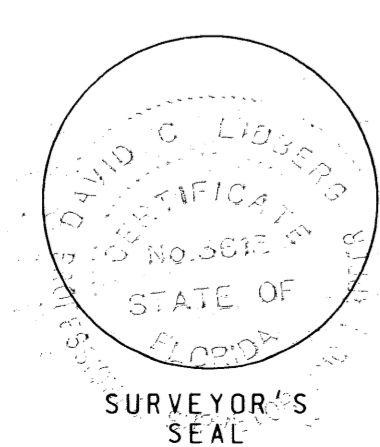
THE NORTHERN PALM BEACH COUNTY IMPROVEMENT DISTRICT HEREBY ACCEPTS THE DEDICATION OF THE WATER MANAGEMENT MAINTENANCE EASEMENT, AS SHOWN HEREON, AND HEREBY ACKNOWLEDGES SAID DISTRICT HAS NO MAINTENANCE OBLIGATIONS ON OR UNDER THE LANDS OVER SAID EASEMENT. IN WITNESS WHEREOF, NORTHERN PALM BEACH COUNTY IMPROVEMENT DISTRICT HAS CAUSED THESE PRESENTS TO BE SIGNED BY PAMELA M. RAUCH, ITS PRESIDENT, AND O'NEAL BARDIN, JR., ITS SECRETARY, AND ITS SEAL TO BE AFFIXED HERETO BY AND WITH THE AUTHORITY OF ITS BOARD OF SUPERVISORS, THIS 13 DAY OF JUNE 2003.

NORTHERN PALM BEACH COUNTY IMPROVEMENT DISTRICT  
BY: Pamela M. Rauch ATTEST: O'Neal Bardin, Jr.  
PAMELA M. RAUCH, PRESIDENT, BOARD OF SUPERVISORS  
O'NEAL BARDIN, JR., SECRETARY, BOARD OF SUPERVISORS

### SURVEYOR'S CERTIFICATION:

STATE OF FLORIDA  
COUNTY OF PALM BEACH  
THIS IS TO CERTIFY THAT THE PLAT SHOWN HEREON IS A TRUE AND CORRECT REPRESENTATION OF A SURVEY MADE UNDER MY RESPONSIBLE DIRECTION AND SUPERVISION; THAT SAID SURVEY IS ACCURATE TO THE BEST OF MY KNOWLEDGE AND BELIEF; THAT PERMANENT REFERENCE MONUMENTS ("P.R.M.'S") AND MONUMENTS ACCORDING TO SEC. 177.091(9), F.S., HAVE BEEN PLACED AS REQUIRED BY LAW; AND, FURTHER, THAT THE SURVEY DATA COMPLIES WITH ALL THE REQUIREMENTS OF CHAPTER 177, FLORIDA STATUTES, AS AMENDED, AND THE ORDINANCES OF PALM BEACH COUNTY, FLORIDA.

David C. Lidberg  
DAVID C. LIDBERG, P.S.M.  
STATE OF FLORIDA LICENSE NO. 3613  
DATE: 5/16/03

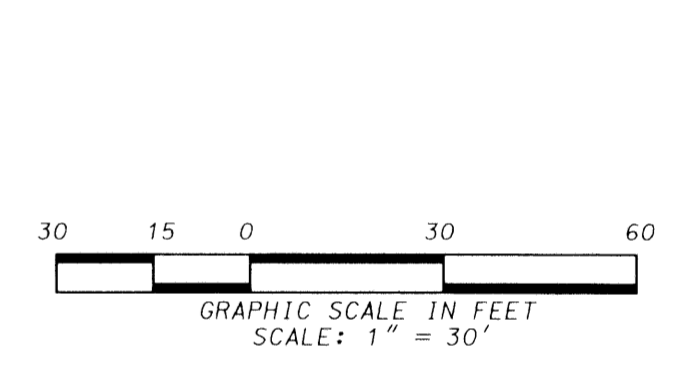
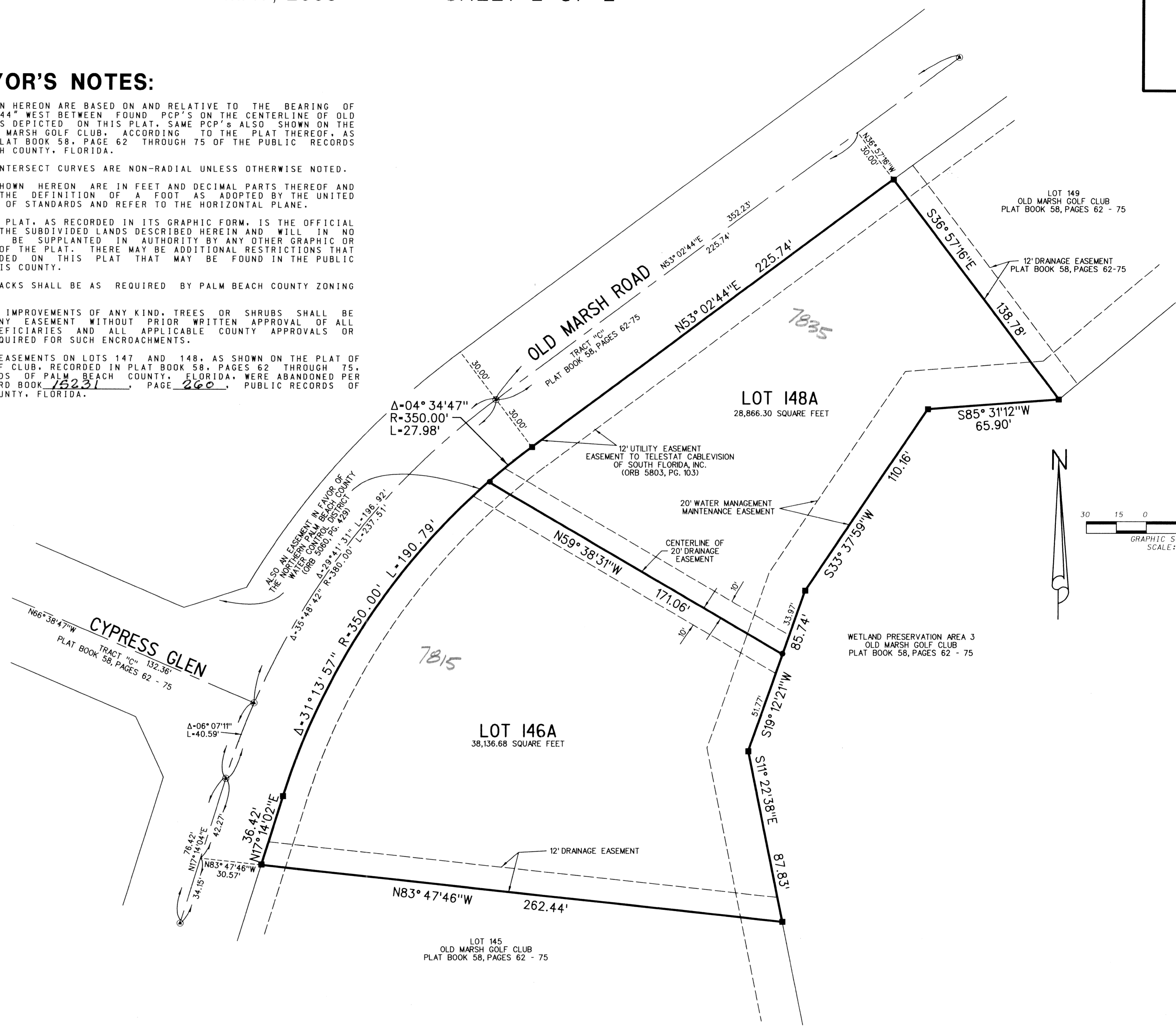


### LEGEND:

- = SET 4"x4" CONCRETE MONUMENT & ALUMINUM DISK STAMPED "PRM LB 4431"
- = SET 3/8" IRON ROD AND CAP LB #4431
- ⊙ = FOUND PK AND DISK STAMPED "PCP 959"

### ABBREVIATIONS:

- C = CENTERLINE
- (C) = CALCULATED
- (M) = MEASURED
- NPBCID = NORTHERN PALM BEACH COUNTY IMPROVEMENT DISTRICT
- ORB = OFFICIAL RECORD BOOK
- PCP = PERMANENT CONTROL POINT
- PRM = PERMANENT REFERENCE MONUMENT



SUBDIVISION OLD MARSH GOLF CLUB REPLAT #14  
BOOK 99 PAGE 77  
FLOOD ZONE B FLOOD MAP # 115B  
QUAD # ZONING  
SE ZIP CODE  
TAZ  
PUD NAME OLD MARSH GOLF CLUB

**LIDBERG LAND SURVEYING, INC.**  
LB4431 675 West Indiantown Road, Suite 200, Jupiter, Florida 33458 TEL. 561-746-8454

CAD: K:\UST\284142\58-62\0253306\0253306.DGN	REF.	JOB	03-025-306
FLD. -	FB. PG.	DATE	02/24/03
OFF. L.J.C.	-	DWG.	03-025P
CKD. D.C.L.	SHEET 2 OF 2		